



Mobile Stand

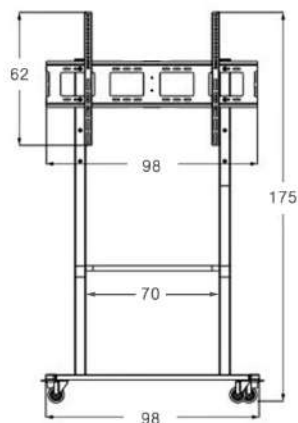
for “SCR Interactive panel”

Specifications

TV COMPATIBILITY		SUPPORTS FROM 75 TO 86 INCHES, WITH A MAXIMUM WEIGHT OF 190 KG
SHELF DIMENSIONS	Upper Shelf : 62 cm (W) × 98 cm (L) Middle Shelf : 26 cm (W) × 70 cm (L) Lower Shelf : 52 cm (W) × 98 cm (L)	
HEIGHT	Maximum height from the floor is 175 cm (excluding the TV), non-adjustable	
MATERIAL	Central column made of square steel for durability.	
MOBILITY	Equipped with 4 caster wheels, with front and rear locking mechanism for stability.	

Size 75"- 86"

front



side

